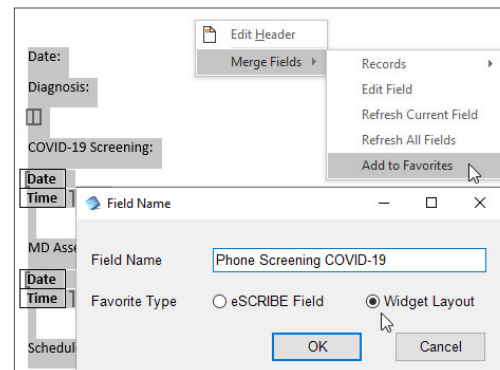
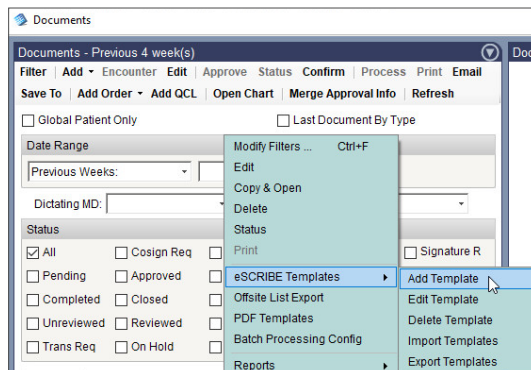


Chart Merge Field Widget

Consolidate assessment history and add new details directly from Chart Viewer

Configure Merge Favorite Template

- 1) Go to **echart > Documents**, right mouse click, open **eSCRIBE Templates > Add Template** (or edit an existing)
- 2) Format the page as you wish to view on widget, including any **Merge Fields**
- 3) Highlight content, right mouse click select **Merge Fields > Add to Favorites**
- 4) Name and select **Widget Layout**



Assign widget to Chart Viewer

- 5) From desired **Chart Tab**, select **Configure Workspace**
- 6) Drag **Merge Field Viewer** to workspace
- 7) Select **Merge Fields > Favorites**, select **from drop down list**
- 8) Select **Configure**
- 9) Form populates, **Add** progressive Assessments as appropriate

