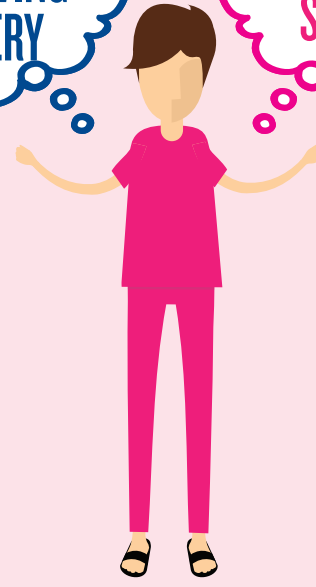


**1 in 8**

U.S. women will develop invasive breast cancer over the course of her lifetime

BREAST CONSERVING SURGERY

MASTECTOMY SURGERY

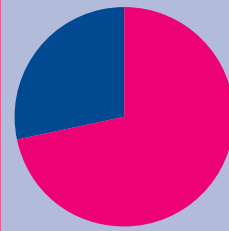


Long-term data indicate that breast conserving surgery in eligible patients proves as effective as mastectomy in regards to local tumor control, relapse-free survival and overall survival

**35.5%** WOMEN WILL SELECT MASTECTOMY

WOMEN WILL SELECT BREAST CONSERVING SURGERY

**64.5%**



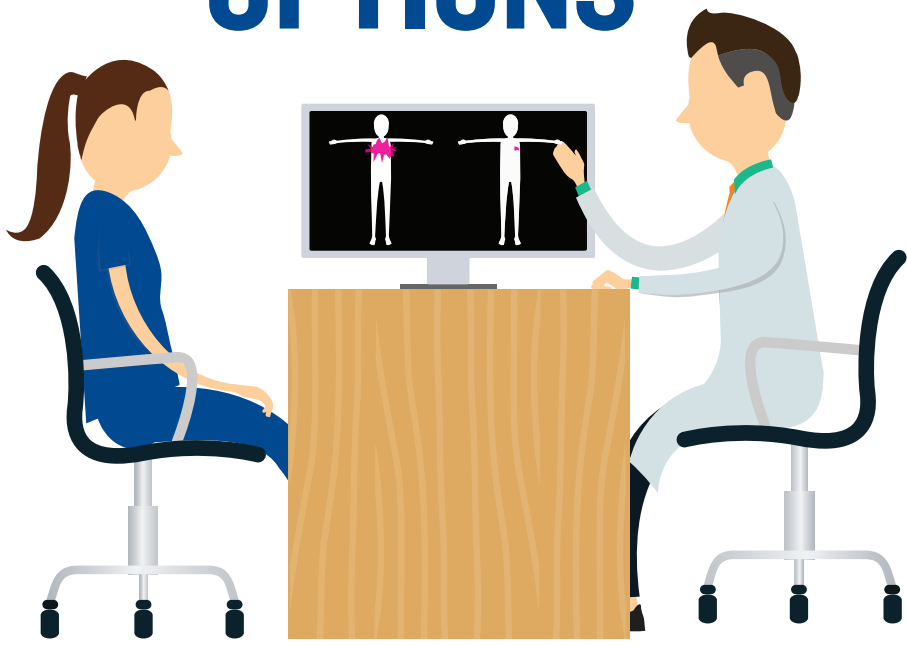
**71.8%**

of women who undergo breast conserving surgery will receive radiation

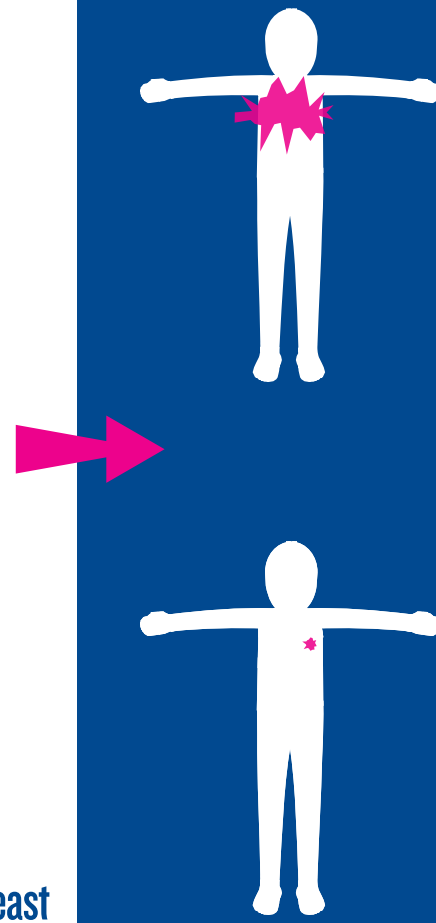
# A WINNING COMBINATION

## Breast Conserving Surgery + Accelerated Partial Breast Irradiation

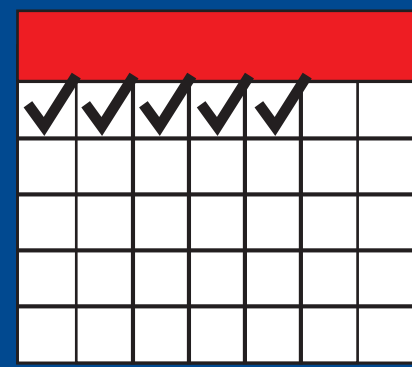
### POST SURGICAL RADIATION THERAPY OPTIONS



- Post surgery, patients receive radiation therapy in two ways:
- Whole Breast Irradiation (WBI) - Radiation covering the whole breast
  - Accelerated Partial Breast Irradiation (APBI) - Radiation only delivered to the part of the breast where the tumor is detected



WBI - 5 to 7 weeks of treatment



APBI - 5 days or less

APBI is a shorter treatment that minimizes risk of side effects including unnecessary radiation reaching healthy breast tissue and nearby structures such as the chest wall, heart, lungs and skin

## GET THE FACTS ON APBI

### BRACHYTHERAPY

Brachytherapy delivers a highly-precise dose of radiation only to the tissue where the cancer is most likely to reoccur.



APBI brachytherapy is a well-established treatment that has been successfully used for more than **20 YEARS** in the U.S.



### YOU MIGHT BE ELIGIBLE

A recent study evaluating a large patient database showed that a substantial proportion of women with early stage breast cancer are eligible for APBI after breast conserving surgery according to consensus guidelines and prospective trial criteria.

APBI is covered by most health insurance plans.

**10X**

The use of APBI brachytherapy has increased 10-fold between 2002 and 2007, based in part by a growing body of evidence supporting its use, including the publication of multiple randomized trials with 5 to 10 years of follow-up.



With the recent updates to the ASTRO evidence-based consensus statement, three leading medical societies classify women 50 years and older as suitable candidates for APBI brachytherapy.



If you or a loved one has received a breast cancer diagnosis it is important to know your options. Elekta and Cianna Medical encourage women to learn more about their treatment options and talk to their doctors about selecting the best individualized care plan.

