

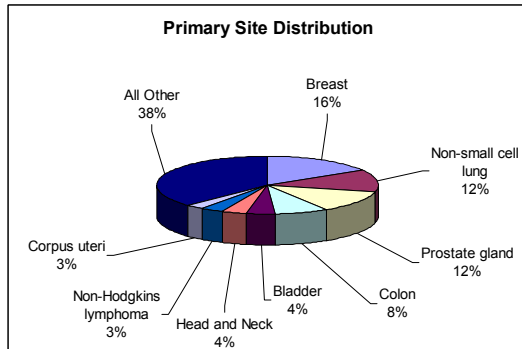
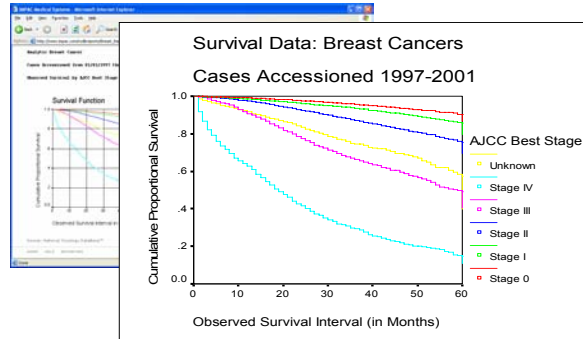
# Voluntary Call for Data

## IMPAC's Data Submission Program for Registry Customers

IMPAC Précis registry customers regularly contribute data to IMPAC's National Oncology DataBase™ (NODB) through quality-checked submissions directly from their registry software. In return, IMPAC provides primary site-specific aggregate data reports to contributors via the Internet. IMPAC's registry customers can use this information to generate annual reports, internal comparative reviews, and much more.

### What is the NODB?

Using the data provided by our customers, IMPAC maintains an extensive database that currently contains more than 2.0 million cases nationally represented oncology cases from 1985 to the present. The longitudinal database features a broad range of data including detailed tumor descriptions, treatment, and survival outcomes. It represents both inpatient and outpatient settings and is a professionally recognized source for timely comparative data with thousands of new cases added monthly.

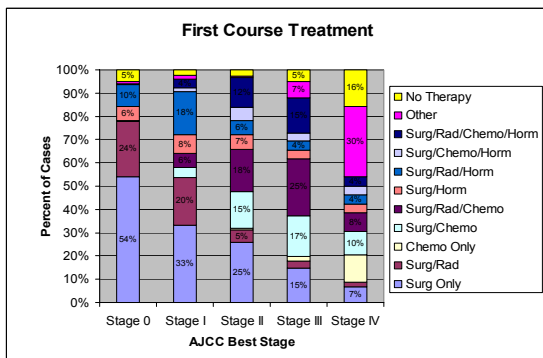


### How do I contribute data?

It is easy to contribute data to the NODB using IMPAC's registry software. The process is the same as sending required submissions to other standard-setting agencies and is completed through secure transmissions.

### How often do I need to send data?

Facilities participating in the program are required to submit data at least once a year, with more frequent submissions encouraged. Customers can access the NODB for the 12-month period following each submission.

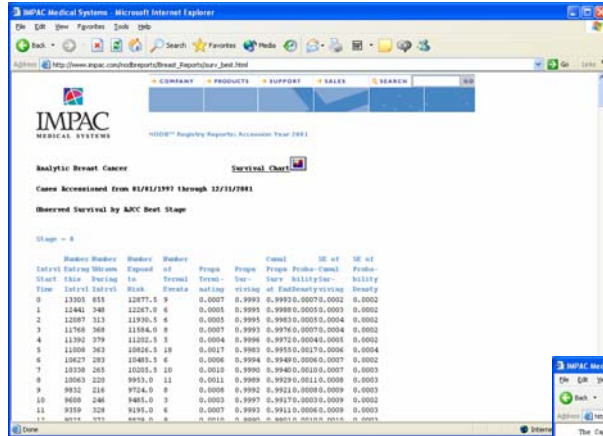


### What information is sent to the NODB?

Data includes demographics, tumor diagnostic, staging, treatment, and follow-up information in a special format on complete cases that have passed edits validation.

### Are there a minimum number of cases that I need to send?

Yes, each submission must include at least 100 cases.

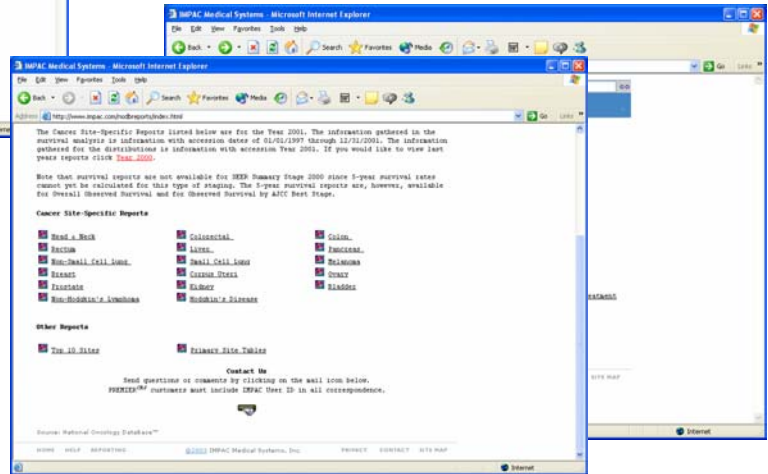


## I'm already uploading data to the NODB for state and national reporting, does this change anything?

No. This voluntary call for data is for IMPAC registry customers who are not currently contributing data.

## How often can I access NODB reports?

Once the contribution is received, IMPAC will provide a username and password to the NODB reports website, located on the restricted area of IMPAC's website. Customers can access this site an unlimited number of times within the 12-month period following a data submission.

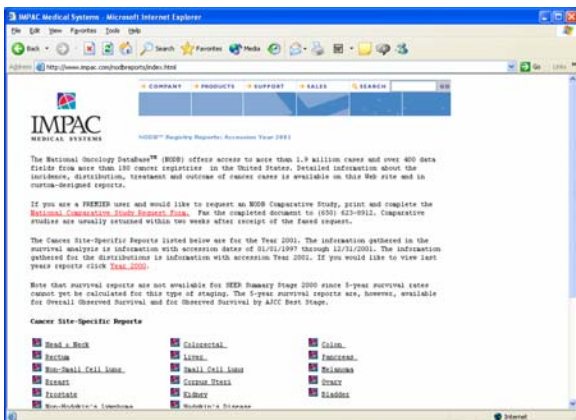


## I have not transitioned to Précis-Hospital Premier yet; can I still contribute and access NODB reports?

Yes. With the implementation of Précis-Hospital, the ability to access non-confidential NODB data from IMPAC's web site is open to all IMPAC Précis registry customers who contribute data.

## How does HIPAA impact the voluntary call for data?

IMPAC is permitted to provide data aggregation services relating to healthcare operations of contracted customers if the facility agrees. IMPAC employs and maintains appropriate safeguards to prevent any unauthorized use or disclosure or other disclosure of individually identifiable health information. The purpose of the NODB is to provide quality assurance analysis of the facilities' operations through NODB reports. IMPAC will maintain a Business Associate agreement with participating registries.



## I'm an IMPAC MRS client; can I participate?

IMPAC MRS Customers can annually contribute to the CIRF database and receive aggregate data through this similar program.

## How do I sign up?

Please visit [www.impac.com/callfordata](http://www.impac.com/callfordata) to register for the program. You can also email us at [precishelp@impac.com](mailto:precishelp@impac.com) for more information.

[www.impac.com/callfordata](http://www.impac.com/callfordata)