

Extend™ Program

LEKSELL GAMMA KNIFE
PERFECTION



Extending the clinical practice



Creating new cl

The Extend program from Elekta is a complete system for extending the utilization of Leksell Gamma Knife Perfexion.

Building upon Elekta's unparalleled expertise in stereotaxy and pioneering innovations in neurosurgery and radiation oncology, our latest line of stereotactic treatment solutions provide new possibilities for even the most challenging cases.

The unique design of Leksell Gamma Knife® Perfexion™ enables the accurate and efficient treatment of the most difficult targets in the head, an ability that continues to set it apart from all other radiosurgery solutions.

With the addition of the eXtend™ program it is now possible to treat new indications that were previously untreatable with Gamma Knife® surgery.

Examples include lesions too large or so critically located that not even Gamma Knife conformity is sufficient. For these cases, fractionation becomes a new alternative for the physician.



Efficient workflow – with ac



MR imaging



Dental imprint



Patient set-up

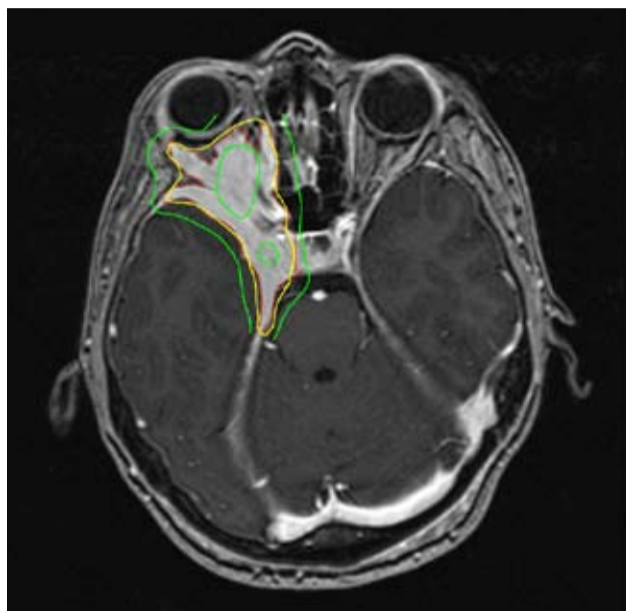
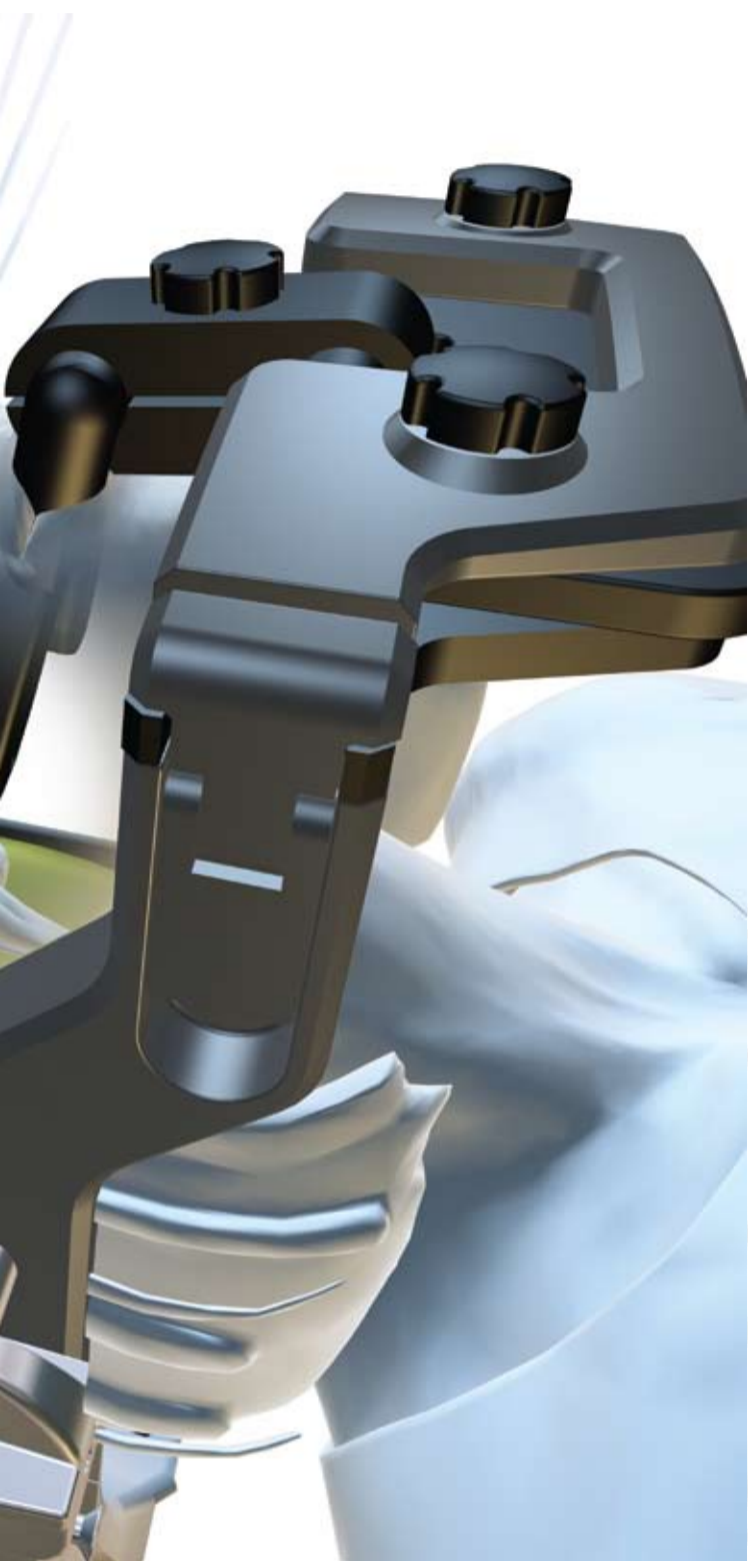


Reference measurement of patient position



CT imaging (CT stereotactic ref)

inical potential



Leksell GammaPlan – software for precision and smooth flow

Leksell GammaPlan® provides all the tools necessary to assure a smooth and efficient workflow in the managing of staged or fractionated treatments. CT segmentation ensures that all data necessary for treating areas outside the brain is provided for accurate dosimetry. MRI is used via image co-registration and also enables offline pre-planning.

eXtend frame system

The rigid carbon-fiber construction of the frame provides maximum stability to enable the most accurate, non-invasive localization available. Physicians can now choose a non-invasive fixation method for targets where treatment accuracy is still crucial, but not paramount.

Following the Elekta tradition of case-driven innovation, this highly refined design is fine-tuned to specific objectives, allowing clinicians to apply the best tool to each patient situation.

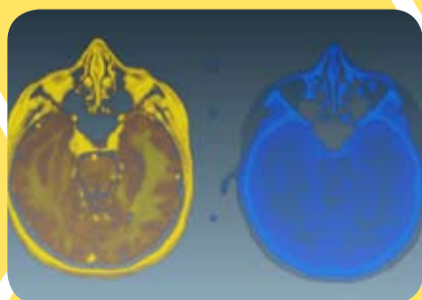
Extending clinical possibilities

In short, eXtend provides cross-functional advantages – in both stereotactic radiosurgery and stereotactic radiation therapy – to offer a new tool for both neurosurgeons and radiation oncologists.

curate patient repositioning



box to provide
ferences)



Co-registration
(MR and CT images)



Treatment planning



Patient positioning
and verification



Treatment

Pending regulatory approvals.

Fighting serious disease

www.elekta.com

Corporate Head Office, Stockholm, Sweden Tel: + 46 8 587 254 00 Fax: +46 8 587 255 00 info@elekta.com

Regional Head Offices for Sales, Marketing & Services

North America,
Atlanta, GA
Tel: +1 770 300 9725
Fax: +1 770 448 6338
info.america@elekta.com

Europe, South & Central America,
Africa, Middle East & India
Tel: +44 1293 654068
Fax: +44 1293 654665
info.europe@elekta.com

Japan,
Kobe
Tel: +81 78 241 7100
Fax: +81 78 271 7823
info.japan@elekta.com

China,
Beijing
Tel: +86 10 8012 5012
Fax: +86 10 8012 5000
info.china@elekta.com

Asia Pacific,
Hong Kong, SAR China
Tel: +852 2891 2208
Fax: +852 2575 7133
info.asia@elekta.com